






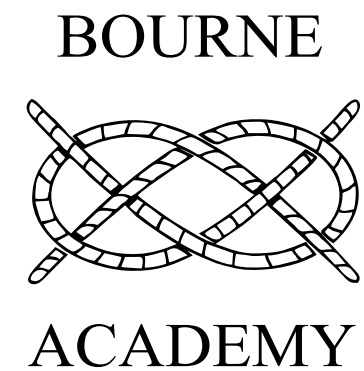
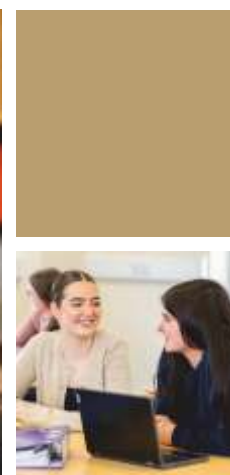


-  Bourne Academy, Edinburgh Crescent, Bourne, Lincolnshire PE10 9DT
-  01778 422365
-  [sixthform@bourneacademy.org](mailto:sixthform@bourneacademy.org)
-  [www.bourneacademy.org/sixthform](http://www.bourneacademy.org/sixthform)
-  [www.instagram.com/BourneAcademy](https://www.instagram.com/BourneAcademy)
-  [www.facebook.com/BourneAcademyLincs](https://www.facebook.com/BourneAcademyLincs)
-  [www.twitter.com/BourneSLAT](https://www.twitter.com/BourneSLAT)

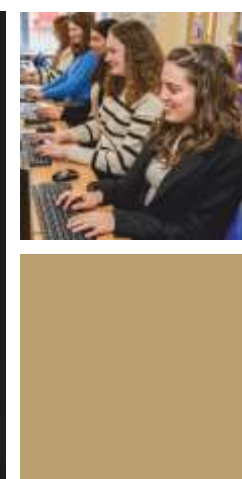
This prospectus is available in alternative formats on request

*All information in this prospectus is correct at the time of printing (Sep 2024). Bourne Academy makes every effort to ensure that the information provided is accurate and correct. We reserve the right to amend information as necessary, which is why we advise you to visit our website for the most current information.*



# SLAT SIXTH FORM

## Prospectus 2025



ASPIRE • CHALLENGE • ACHIEVE



# A warm welcome

South Lincolnshire Academies Trust (SLAT) have a long established and highly successful Sixth Form at Bourne Academy where we are pleased to welcome students from secondary schools all across Lincolnshire, Rutland and Cambridgeshire.

We offer different study pathways with a wide choice of subjects, which enables students to 'mix and match' A-levels and BTEC qualifications so they can get the best options available.

Students choose to study with us because of the results they can achieve. Over the last five years, we have had an average **99% pass rate in A-levels and BTECs** and are proud that 99% of students went to their first choice university. Not everyone wants to go to university after Sixth Form, which is why our staff and careers team will support every student and help prepare them for university, higher level apprenticeship or employment.

Our Sixth Form has a friendly and professional environment where there is a mutual respect between staff and students. We treat our students as young adults but will always provide a high level of pastoral support both in and out of the classroom. The Sixth Form team have an open door policy so someone is always available for students to ask questions or discuss any issues they may have.

Sixth Form students are important role models for the rest of the school. We provide opportunities to be involved in subject departments as well as hold positions of responsibility such as Head Student, and to participate in local community projects.

The positive relationships which are built up between students, staff and parents/carers will mean that we all work together to achieve the very best for every student.

Please do not hesitate to contact us if you have any questions and we look forward to welcoming you into our Sixth Form family.

Visit [www.bourneacademy.org/sixthform](http://www.bourneacademy.org/sixthform) for further details about the Sixth Form and detailed subject information.

## Sixth Form Open Evening

Our next Sixth Form Open Evening will take place on **Thursday 7th November 2024** from 5.30pm to 8.00pm.

At the Open Evening there will be presentations plus you will have the opportunity to take a guided tour with our students and meet and speak to staff from the wide variety of subjects on offer.



**Mrs Lucy Conley**  
Chief Executive Officer



**Mrs Jemma Curson**  
Head of School

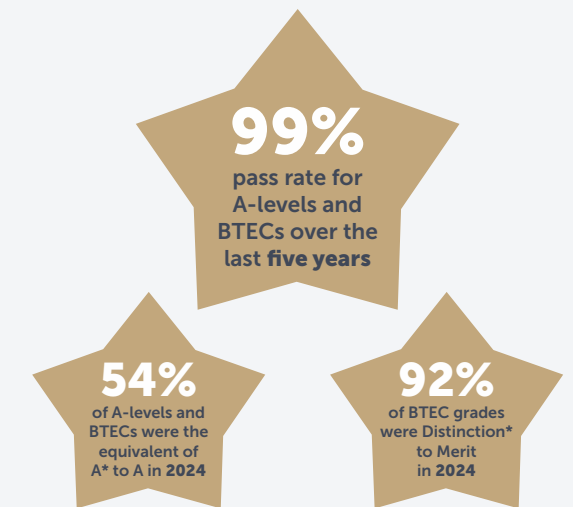


**Mrs Libby Barber**  
Associate Director  
of Post-16 and Careers





# 10 reasons to choose Bourne Academy Sixth Form



## Wide choice of subjects

As a large Sixth Form with over 300 students, you will be able to choose from a wide range of A-level and BTEC subjects.

## Choice of study pathways

You can choose to study three or four subjects on our Academic, Vocational or Combination study pathways.

## Our students achieve great results

Over the last five years, we have had an average 99% pass rate in A-levels and BTECs. In 2024, 54% of A-levels and BTECs were the equivalent of grade A\* to A.

## Modern Sixth Form Centre

Our purpose built Sixth Form Centre has a large common room, study centre and suite of modern classrooms.

## Enrichment opportunities

An outstanding SMSC and enrichment programme is embedded into every timetable plus there are extra-curricular activities including The Duke of Edinburgh's Award.

## Outstanding teaching

As one of the top ranked non-selective mixed secondary schools in Lincolnshire, we are able to recruit the highest calibre of teachers.

## Gain work experience

Every student will undertake work experience, which will help with their UCAS application or future employment.

## Friendly and professional environment

The Sixth Form Centre is a friendly environment in which to study. There is not a uniform but a dress code where our students come professionally dressed as they would in the workplace.

## Exceptional pastoral support

We have a dedicated pastoral team who focus on supporting all students both in and out of the classroom. We recognise student achievements an annual programme of student rewards.

## Your future matters to us

We support every student whether they want to go to their first choice university, start a higher level apprenticeship or gain employment.





**SCAN ME**  
FOR SUBJECT  
INFORMATION



# Study pathways, subjects and entry requirements

One of the benefits of studying at the SLAT Sixth Form is having a choice of study pathways so you can either choose 3 or 4 A-levels, 3 BTEC vocational qualifications or 'mix and match' a combination of both A-levels and BTECs.

## Academic Pathway

A-levels

### ENTRY REQUIREMENTS

6 x GCSEs / BTEC Level 2 at Grade 5 or above (including English Language **AND** Maths at grade 5) plus any subject specific entry requirements.

### ACADEMIC SUBJECTS

- Biology
- Chemistry
- English Language
- English Literature
- Extended Project Qualification (EPQ)
- French
- Geography
- History
- Mathematics
- Physics
- Psychology
- Religious Studies
- Sociology

## Vocational Pathway

BTEC National Extended Certificates

### ENTRY REQUIREMENTS

5 x GCSEs / BTEC Level 2 at Grade 4 or above (including English Language **OR** Maths at grade 4) plus any subject specific entry requirements.

### VOCATIONAL SUBJECTS

- Applied Science
- Art & Design
- Business
- Creative Digital Media Production
- Health & Social Care
- Information Technology & Computing
- Music Performance
- Performing Arts
- Sport & Physical Activity (CTEC)
- Travel & Tourism

### GCSE RESITS

If you did not achieve a grade 4 in GCSE English Language **OR** Maths, you have the opportunity to resit this GCSE in Year 12.

## Combination Pathway

You can 'mix and match' A-levels and BTEC National Extended Certificates

### ENTRY REQUIREMENTS

5 x GCSEs / BTEC Level 2 at Grade 5 or above (including English Language at Grade 4 **AND** Maths at Grade 4) plus any subject specific entry requirements.



# Specific subject entry requirements

To study some subjects at the SLAT Sixth Form you will need to achieve specific grades at GCSE or equivalent at BTEC Level 2.

Applied Science	Grade 4-4 in Combined Science Trilogy <b>OR</b> Grade 4 in Biology, Chemistry or Physics
Art & Design	Grade 4 in Art, Product Design or Textiles
Biology	Grade 7-7 in Combined Science Trilogy <b>OR</b> Grade 7 in Biology and Grade 6 in Maths
Business	Any five GCSEs at Grade 4
Chemistry	Grade 7-7 in Combined Science Trilogy <b>OR</b> Grade 7 in Chemistry and Grade 7 in Maths
Creative Digital Media Production	Any five GCSEs at Grade 4
English Language	Grade 6 in either English Language or English Literature
English Literature	Grade 6 in either English Language or English Literature
French	Grade 6 in French
Geography	Grade 6 in Geography
Health & Social Care	Grade 4-4 in Combined Science Trilogy <b>OR</b> Grade 4 in Biology, Chemistry or Physics
History	Grade 6 in History
Information Technology & Computing	Any five GCSEs at Grade 4
Mathematics	Grade 7 in Maths
Music Performance	Grade 4 in Music (audition may be required)
Performing Arts	Grade 4 in Drama / Performing Arts (audition may be required)
Physics	Grade 7-7 in Combined Science Trilogy <b>OR</b> Grade 7 in Physics and Grade 7 in Maths
Psychology	Grade 6 in English Language and Grade 5 in Maths
Religious Studies	Grade 6 in Religious Studies or English Language
Sociology	Grade 5 in Sociology (if studied) or English Language
Sport & Physical Activity	Grade 4 in Sport & Grade 4-4 in Combined Science Trilogy <b>OR</b> Grade 4 in Biology, Chemistry or Physics
Travel & Tourism	Any five GCSEs at Grade 4







# Want to choose four subjects?

Students have the opportunity to study four subjects at our Sixth Form, but to do this, you must achieve a Grade 7 in English and Maths plus a Grade 7 in all subjects selected at A-level or BTEC.

It is worth noting that only three A-levels or BTECs are counted towards the UCAS tariff when making a university application. This is why we also offer the Extended Project Qualification (EPQ) as this is accepted by many universities and can strengthen your UCAS application.

## Extended Project Qualification (EPQ)

The EPQ is a two-year Level 3 qualification equivalent to one AS-level that is studied in your own time and supported by Sixth Form staff.

This is a valuable qualification that supports students with the transition into higher education or employment as it allows for the development of critical thinking, reflective analysis, problem solving and independent learning skills.

Students will plan, research and evaluate a self-selected project similar to the dissertation that university students are required to produce.

Through in-depth independent study, students will develop and apply skills creatively, resulting in one of the following outcomes - a dissertation, an investigation, a performance or an artefact.



# Choosing your options

Before you start Sixth Form, you will have an opportunity to meet with a member of staff to discuss your option choices and future career development to ensure you are choosing the relevant subjects.

## Think about your future career

Look a few years ahead and think about what career you want and then see what qualifications are needed to get your dream job. If you need a degree to get the job, then look at the specific entry requirements that universities require.

For students interested in a career in Law, subjects such as English, History, Psychology or Sociology are recommended as you do not need A-level Law to study a Law degree.

## What subjects go together

Mathematics and Physics are great if wanting to work in Engineering. English and Performing Arts are a popular combination. Business and Psychology are useful to study together and Sociology goes well with Health & Social Care.

## Keep your options open

Subjects such as English, Mathematics, Sciences and IT are all great qualifications to have as they are transferrable across many careers, but so too are creative subjects such as Art and Media.

## Try something new

Subjects such as Business, Creative Digital Media Production, Health & Social Care, Psychology or Sociology do not require you to have studied them at GCSE so you can try something new.







# Student timetable and enrichment

We will provide students the contact time they need to achieve the best results. Students will have five hours of teaching time per subject with one hour of supported study per subject.

Our students study full-time over five days a week. The academic day starts at 8.40am and finishes at 3.15pm which allows students to have out of school commitments such as part-time jobs or extra-curricular activities which will enhance their UCAS application.

The study timetable consists of one hour periods and every student will receive a personalised timetable that includes private study sessions and non-contact periods. The non-contact periods allow time for volunteering, work experience, driving lessons or private appointments (such as doctor or dentist).

All students will gain work experience through a timetabled work placement plus there are opportunities to get involved in the school with supporting our subject departments.

To inspire our students, there are guest speakers from employers, local businesses and national organisations. Our weekly SMSC programme of study sessions focus on personal development and cover a diverse range of topics such as consent, mental health, parliament and higher education.

Students play an integral part of getting involved in the local community through charity work, performances and volunteering. There are music and performing arts clubs in the school as well as The Duke of Edinburgh's Award. We have sports teams who compete against other schools as well as a series of Student vs Staff challenges.

## Sample timetable

<b>M</b>	Registration	SUBJECT 1	SUBJECT 1	Break		Independent Study Lesson	Lunch	SUBJECT 2	Tutorial / Assembly / SMSC Session
<b>T</b>					SUBJECT 3	SUBJECT 3		SUBJECT 1	
<b>W</b>			Independent Study Lesson		SUBJECT 2	SUBJECT 2			
<b>T</b>		SUBJECT 3	SUBJECT 3		SUBJECT 1	SUBJECT 1			
<b>F</b>		SUBJECT 2	SUBJECT 2		Independent Study Lesson			SUBJECT 3	



# Our students achieve great results

We are proud that Bourne Academy is one of the top performing non-selective mixed secondary schools in the whole of Lincolnshire and consistently out-performs many grammar schools across the county.

This academic success continues in Sixth Form as our students achieve outstanding results in both A-levels and BTEC qualifications.

Over the last five years, our students have achieved an average **99%** pass rate for both A-level and BTEC qualifications.

In 2024, our students achieved the following grades:

- **99%** pass rate for both A-levels and BTECs
- **54%** of A-level and BTEC grades were the equivalent to A\*-A
- **92%** of BTEC grades were Distinction\* to Merit (equivalent to A\*-C at A-level)
- **71%** of A-level History grades were A\*-B
- **70%** of A-level English Literature grades were A\*-B
- **100%** of BTEC Music Performance grades were Distinction\* (equivalent to A\* at A-level)
- **90%** of CTEC Sport & Physical Activity grades were Distinction\* or Distinction (equivalent to A\*-A at A-level)





# Careers support and student destinations

Sixth Form is a vital period where students will start to specialise in specific areas as they work towards higher education, a higher level apprenticeship and training or employment.

It is important to us that our students are fully prepared so they succeed in their chosen pathway. Our dedicated and experienced careers team work with every Sixth Form student offering objective and impartial advice so they can make a successful transition.

The majority of our students choose to go to university and we will start working with students on their UCAS application in Year 12. We encourage visits to university Open Days as well as providing support and information for personal statements, applications, subject areas and student finance.

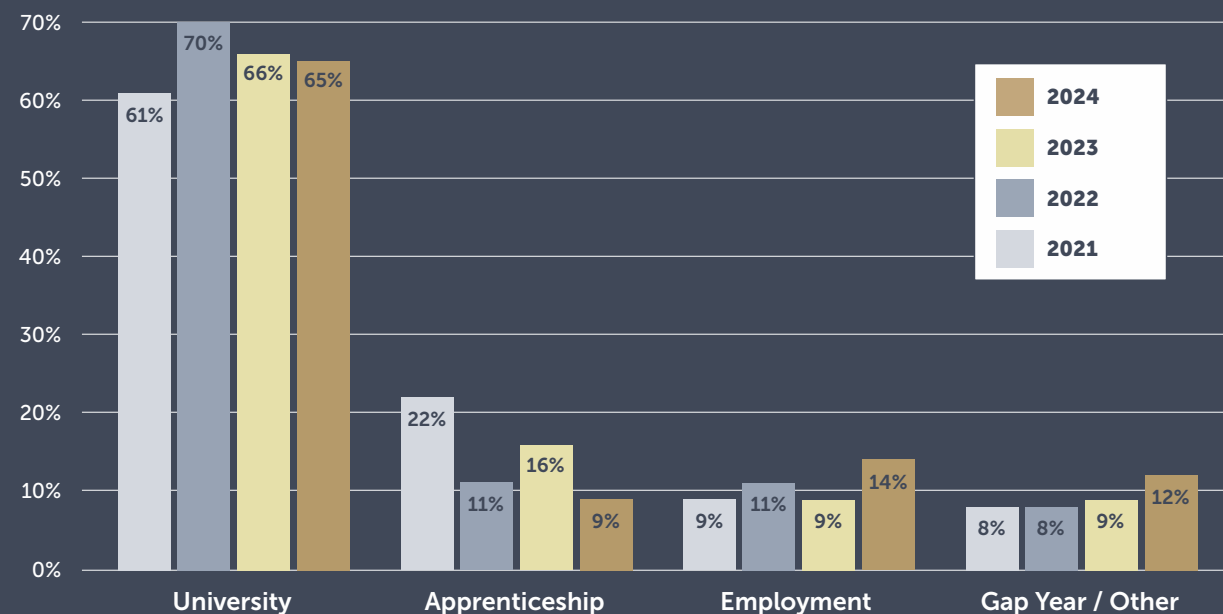
## UCAS tariff

Students from the Academic, Vocational and Combination study pathways can all progress to university. In 2024, 100% of students went to their first choice university.

As you can see on the UCAS tariff table, the BTEC qualifications are the equivalent to A-levels.

A-levels	A*	56 pts	BTEC National Extended Certificate	Distinction*	56 pts
	A	48 pts		Distinction	48 pts
	B	40 pts		Merit	32 pts
	C	32 pts		Pass	16 pts
	D	24 pts			
	E	16 pts			

## Student Destinations 2021-24



# Class of 2024



## Lewis Little

**160 UCAS points + EPQ**

Lewis improved his chances of gaining a place at his first choice university by studying the Extended Project Qualification (EPQ) on the **ACADEMIC PATHWAY**. After achieving an A\* in A-level History, A\* in A-level Psychology, A in A-level English Literature and an A in the Extended Project Qualification, he is now studying History at The University of Sheffield, which is a prestigious Russell Group university.



## Lena Mairs

**168 UCAS points**

Lena was a Head Student at Bourne Academy who had a keen interest in the social sciences as well as being highly creative. She studied a mix of A-level and BTEC subjects on the **COMBINATION PATHWAY** to secure a place at a Russell Group university. She achieved maximum grades in her three subjects with an A\* in A-level Psychology, A\* in A-level Sociology and a Distinction\* in BTEC Art & Design. She is now studying Psychology at the University of York.



## Cameron Rosam-Goodwin

**160 UCAS points**

Cameron is a talented performer with a passion for both music and drama so he therefore chose subjects on the **VOCATIONAL PATHWAY**. He achieved a Distinction\* in BTEC Music Performance, a Distinction in BTEC Performing Arts and a Distinction\* in BTEC Applied Science. These grades are the equivalent to 2 x A\* and 1 x A grades at A-level. He plans to study Music at The University of Sheffield after taking a gap year to go travelling around Europe and work for the family business.



## Jacob Cox

**152 UCAS points**

Jacob followed the **ACADEMIC PATHWAY** to focus his studies on separate sciences and mathematics. He achieved an A\* in A-level Biology, A in A-level Chemistry and an A in A-level Mathematics. He is now studying Chemistry at Lancaster University and after graduating he hopes to pursue a career in scientific research.



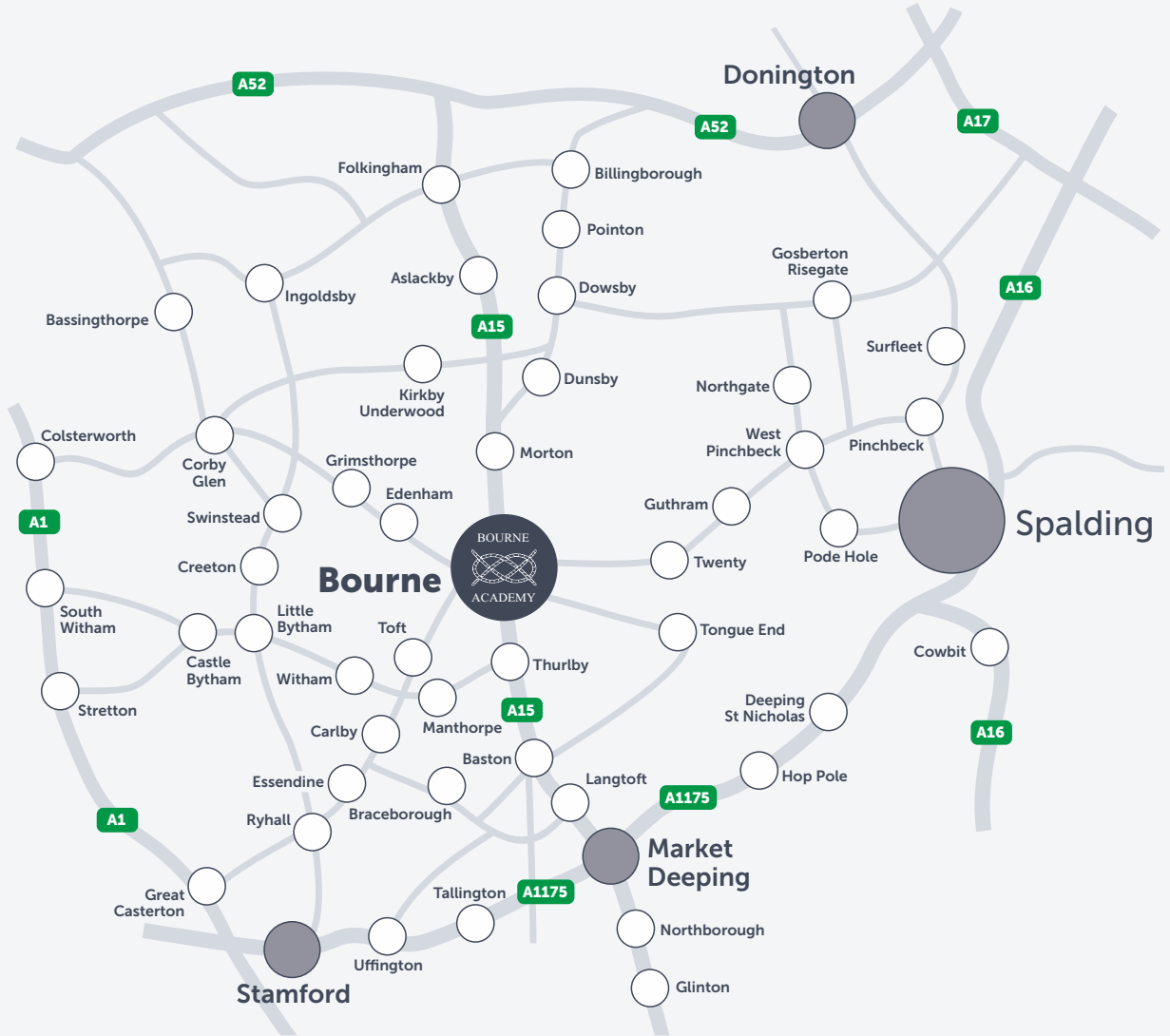
# Getting to Sixth Form

Students choose to come to our Sixth Form from towns and villages all across Lincolnshire and surrounding counties. Bourne is well connected with excellent road links and bus routes making us easy to get to.

If you need to travel by bus, the main bus operator in the area is Delaine Buses. Details of bus routes and pick up / arrival times can be found by visiting [www.delainebuses.com](http://www.delainebuses.com).

To apply for Post-16 transport, please visit [www.lincolnshire.gov.uk](http://www.lincolnshire.gov.uk) and search for 'Apply for post-16 transport'.

The Sixth Form have different bursaries available to help support students with travel costs. Students from Spalding Academy and Cowley Academy, due to having no Sixth Form provision on site, may be entitled to **free bus transport** from Spalding.







# Quality and affordable catering

Our canteen is managed in-house and all meals are freshly made in our kitchen every day.

We operate a cashless catering facility where students can purchase a hot main meal for only £2.50 per day\*. Our main meal menu changes every day on a six-week cycle and there are also jacket potatoes, sandwiches, wraps and salad bar options available.

Healthy eating is important to us, which is why we use quality ingredients and reduce the amount of salt, sugar and fats in our recipes.

The canteen is open to students for breakfast, morning break and lunch. Sixth Form students are also able to use the canteen during the daytime when they do not have timetabled sessions.

## Dress code

Our students do not have uniform in Sixth Form, but instead we have a dress code which is similar to what is expected in a professional business environment.

The way that students dress is important to create a smart, disciplined and purposeful academic environment and as role models to promote the public image of Bourne Academy in the wider community.

*\* correct at the time of printing*



# Financial support for students

The **16-19 Bursary Fund** is available to help Sixth Form students who are in need of financial support to stay in education. There are two types of bursary available to help students.

These can help with:

- **Food** (unless you already receive free school meals)
- **Transport**
- **Books / stationery**
- **Clothing**
- **Equipment for courses**
- **Help with educational visits**

## Discretionary Bursary

The Discretionary Bursary is awarded depending on each student's individual circumstances.

It may be available if your parents are in receipt of means tested benefits, such as Universal Credit and Job Seekers Allowance or if your parents' financial situation changes, which may affect your education.

## Vulnerable Bursary

The Vulnerable Bursary is worth up to **£1,200** per academic year.

This bursary is available for students who are in Local Authority Care, living independently having left Local Authority Care, or disabled students in receipt of both Employment Support Allowance and Disability Living Allowance or Personal Independence Payments in their own name.







**SCAN ME**  
TO APPLY  
ONLINE



# How and when to apply

Students at Bourne Academy, Spalding Academy, Cowley Academy or any other secondary school can apply to us.

## Deadline for applications

The first deadline to make an application is **Friday 13th December 2024**. Students who apply by this date will be able to choose their preferred subject options. Students who apply after this date may have limited subject options if subject places are full, but you can still apply.

## Apply online

Visit [www.bourneacademy.org/sixthform/apply](http://www.bourneacademy.org/sixthform/apply) or scan the QR code opposite to apply using our online application form.

## Advice and guidance meeting

All applicants will have a meeting with a member of the Sixth Form Team to discuss your option choices and future career development to ensure you are choosing the relevant subjects.

## Induction / Transition Day

All applicants will visit the Sixth Form in June 2025 for an induction event so you are fully prepared for when you start in September 2025.

## GCSE Results Day

GCSE results will be released on Thursday 21st August 2025. If you have not yet applied to Sixth Form, then you can still apply after you get your results.