

Careers Education



Aspire | Challenge | Achieve

# JOB

OF THE WEEK

Our Job of the week this week is  
**Psychologist**



# Job of the Week – Psychologist

## WHAT YOU DO

Your day-to-day tasks will depend on your specialism. For example:  
An **Educational Psychologist**, where you would:

- help children to overcome difficulties
- interview young people and assess their emotional state
- develop treatment programmes to help clients' psychological wellbeing

As an **Occupational Psychologist**, you'll:

- assess the productivity of a business and how the staff work
- develop processes to measure employee talent and progress
- have one-to-one sessions with employees to support their wellbeing

In **Counselling Psychology**, you may:

- work with children and adults to explore their social, economic, cultural and spiritual health
- use psychotherapeutic methods, like cognitive behavioural therapy (CBT), to treat patients
- assess patients and recommend treatments

If you're a **Neuropsychologist**, you could:

- investigate the impact of injury or illness on patients' behaviour
- make rehabilitation and treatment recommendations
- look to improve patients' health and quality of life

## SKILLS REQUIRED

You will need:

- knowledge of psychology
- counselling skills, active listening and a non-judgemental approach
- customer service skills
- the ability to understand people's reactions
- sensitivity and understanding
- excellent verbal communication skills
- patience and the ability to remain calm in stressful situations
- to enjoy working with other people
- to be competent using a computer and the main software packages

## WHAT YOU WEAR

Smart, casual clothing to ensure your patients/ clients are at ease and comfortable  
Some NHS roles may require you to wear a uniform



## WORKING CONDITIONS

You could work in an NHS or private hospital, at a school, in a therapy clinic, in the community or at a client's business

It may also be emotionally demanding and challenging

## WORKING HOURS

**35-40**

May require some flexibility but generally 9am-5pm Mon-Fri

## ANNUAL LEAVE

Unless you are self-employed you will usually get the standard 27 days rising with length of your employment



## ANNUAL INCOME

**£31,365 - £87,754**



## EDUCATION & EXPERIENCE

To pursue this career you will need a degree:

### University

You'll need to:  
complete a Psychology degree accredited by The British Psychological Society (BPS)  
Graduate Basis for Chartered Membership  
an accredited postgraduate qualification in your chosen specialism

Once you have a psychology degree, you can specialise in a particular area, for example educational or forensic psychology.

To become a neuropsychologist, you must have specialist knowledge in neuroscience and a postgraduate qualification from the educational or clinical psychology fields.

Competition for postgraduate training is strong. You'll need a first or upper second class degree, and evidence of excellent research skills to apply. You'll also need relevant work experience.

If you have a degree in a different subject, you may be able to complete an approved psychology conversion course.

### Entry requirements

You'll usually need 2 to 3 A levels, or equivalent, for a degree or a degree in any subject for a postgraduate course



# Labour Market Information

In the Careers section of the school website you can find the useful comparison tool the 'Labour Market Information widget'

Use the widget to compare different job roles in any employment sector or relating specifically to the 'Job of the Week'.

Psychologists		Social workers		Therapy professionals n.e.c.	
Weekly Pay <b>£690</b>	Annual Pay <b>£35,880</b>	Weekly Pay <b>£690</b>	Annual Pay <b>£35,880</b>	Weekly Pay <b>£420</b>	Annual Pay <b>£21,840</b>
Hours/Week <b>32h</b>	Hourly Pay <b>£22</b>	Hours/Week <b>36h</b>	Hourly Pay <b>£19</b>	Hours/Week <b>25h</b>	Hourly Pay <b>£17</b>
<b>Workforce Change (projected)</b>		<b>Workforce Change (projected)</b>		<b>Workforce Change (projected)</b>	
Growth <b>8.7%</b>	Replacement <b>53.7%</b>	Growth <b>5.7%</b>	Replacement <b>56.1%</b>	Growth <b>8.7%</b>	Replacement <b>53.7%</b>
The workforce is projected to grow by 8.7% over the period to 2027, creating 4,200 jobs. In the same period, 53.7% of the workforce is projected to retire, creating 25,800 job openings.		The workforce is projected to grow by 5.7% over the period to 2027, creating 6,800 jobs. In the same period, 56.1% of the workforce is projected to retire, creating 66,900 job openings.		The workforce is projected to grow by 8.7% over the period to 2027, creating 4,200 jobs. In the same period, 53.7% of the workforce is projected to retire, creating 26,200 job openings.	
You might find this job in Social work Residential care Health Education Public admin. & defence		You might find this job in Health Social work Residential care Public admin. & defence Employment activities		You might find this job in Social work Residential care Health Education Food & beverage services	
<a href="#">More info</a>	<a href="#">Clear card</a>	<a href="#">More info</a>	<a href="#">Clear card</a>	<a href="#">More info</a>	<a href="#">Clear card</a>

## Psychologists

Psychologists research, study and assess emotional, cognitive and behavioural processes and abnormalities in human beings and animals and how these are affected by genetic, physical and social factors.

Common tasks in this job:

- develops and administers tests to measure intelligence, abilities, aptitudes, etc. and assesses results;
- develops treatment and guidance methods and gives treatment or guidance using a variety of therapy and counselling techniques;
- observes and experiments on humans and animals to measure mental and physical characteristics;
- analyses the effect of hereditary, social and physical factors on thought and behaviour;

Back

Clear card

## Social workers

Social workers provide information, advice and support to those who are socially excluded or are experiencing crisis; they protect the welfare of vulnerable groups including children, young people, people with disabilities, elderly people and people who are mentally or physically ill, and they may specialise in specific areas of work.

Common tasks in this job:

- liaises with other health and social care professionals and agencies to identify those in need and at risk within the local community;
- interviews individuals and groups to assess and review the nature and extent of difficulties;
- undertakes and writes up assessments to specified standards;
- arranges for further counselling or assistance in the form of financial or material help;

Back

Clear card

## Therapy professionals n.e.c.

Job holders in this unit group plan and apply physical and therapeutic treatments and activities to assist recovery from physical and mental illness and to minimise the effects of disabilities not elsewhere classified in MINOR GROUP 222: Therapy professionals.

Common tasks in this job:

- prescribes diet therapy and gives advice to patients, health care professionals and the public on dietetic and nutritional matters for those with special dietary requirements or to prevent illness amongst the general population;
- diagnoses and treats disorders of vision and eye movements, monitors subsequent progress and recommends further optical, pharmacological or surgical treatment as required;
- manipulates and massages patient to discover the cause of pain, relieve discomfort, restore function and mobility and to correct irregularities in body structure;
- adopts a holistic approach in assessing the overall health of the patient, and treats by inserting needles under the skin at particular locations according to the disorder being treated;

Back

Clear card

To compare the Labour Market Information of different job roles that you might be interested in please visit the Careers section on the school website.

# JOB OF THE WEEK

Find out about different jobs in psychology with these videos:

Sport Psychologist



<https://www.youtube.com/watch?v=n17aiWE38hA>

Counselling Psychologist



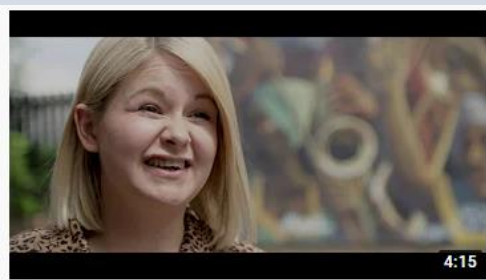
<https://www.youtube.com/watch?v=0SJryLVLGg4>

Psychologist in a Psychiatric Intensive Care Unit (PICU)



<https://www.youtube.com/watch?v=BmHrz2ugbD4>

Forensic Psychologist



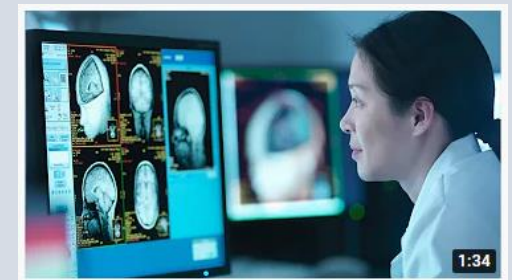
<https://www.youtube.com/watch?v=HMPIvOUvqPA>

Child Psychologist



[https://www.youtube.com/watch?v=o8HOJN\\_Tp6E](https://www.youtube.com/watch?v=o8HOJN_Tp6E)

Neuropsychologist and Clinical Psychologist



<https://youtu.be/hhfmwmdoqBU>

# JOB OF THE WEEK

Click on the website links to research the job role further:

[Psychologist | Explore careers | National Careers Service](#)

[What is Psychology? | BPS](#)

[Psychology Subject Guide | Why Study Psychology At Uni? | UCAS](#)

[Criminal Psychology Degrees Courses in UK | Compare Best Undergraduate University Courses | Whatuni](#)

[Becoming a Police Psychologist | Psychology Today United Kingdom](#)