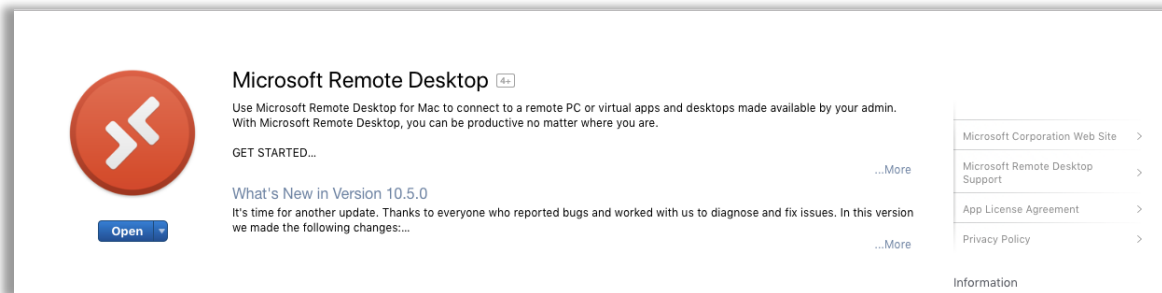


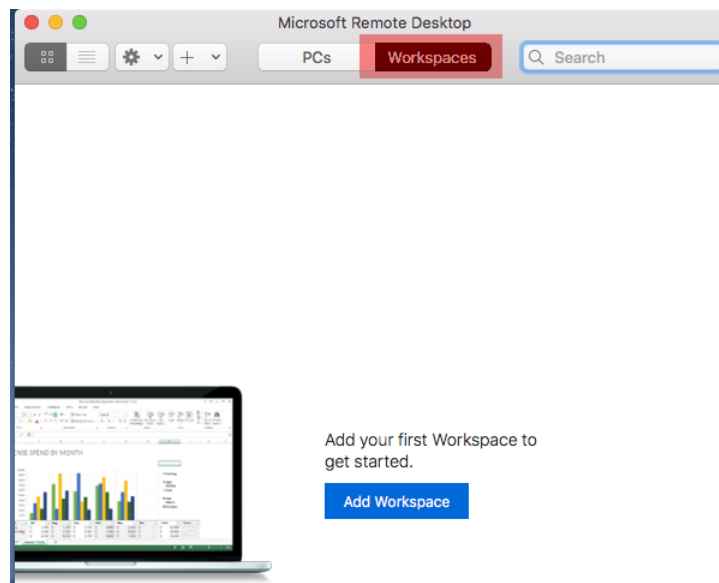
Remote Desktop on Apple Mac (MAC OS X Devices)

PLEASE NOTE: The example images that follow will differ by school and the resources available to you. The images may also show configuration information – please ensure you enter the configuration settings listed in the guidance for your school, shown in each step.

1. Go to the Apple Store on the device and search for and download **Microsoft Remote Desktop Connection**



2. Open the **Microsoft Remote Desktop App**, and select **Workspaces** button at the top, then click **Add Workspace**



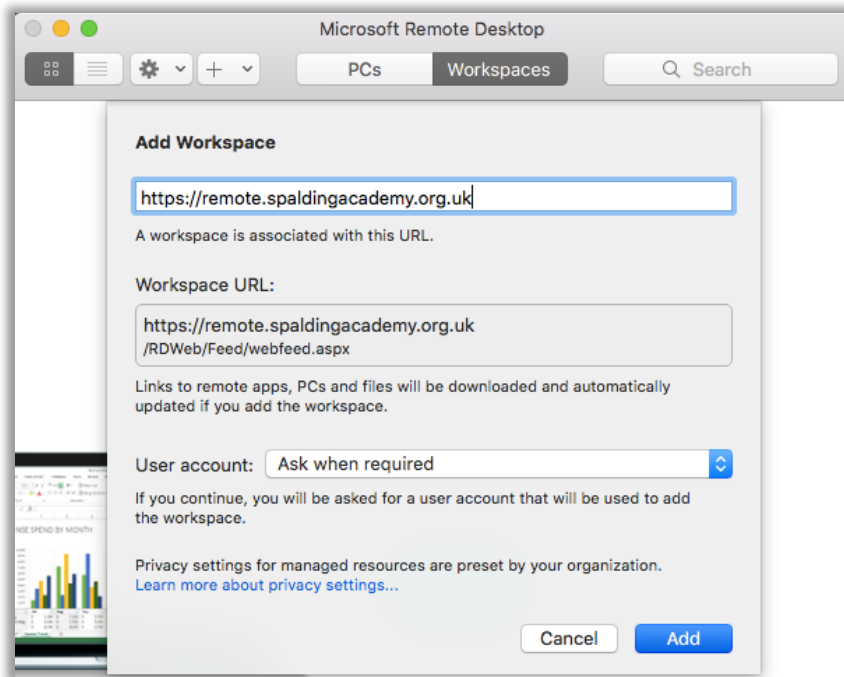
3. Type in the following for whichever school you are accessing into the address box

Spalding Academy: <https://remote.spaldingacademy.org.uk>

Bourne Academy: <https://remote.bourneacademy.org>

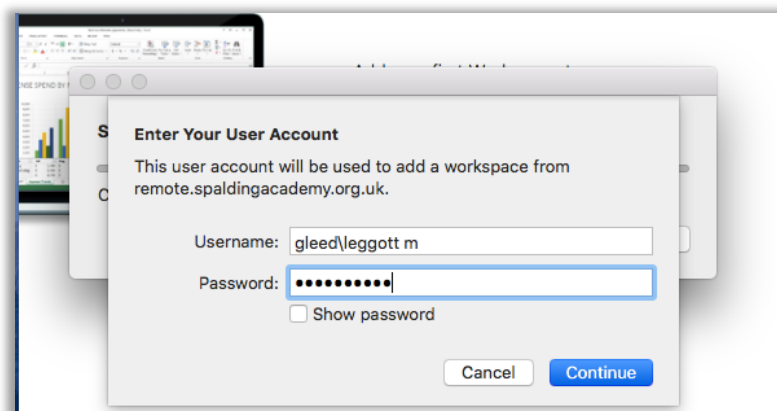
Giles Academy: <https://remote.gilesacademy.co.uk>

4. Once entered the window will detect the remote connection and show similar to the below:

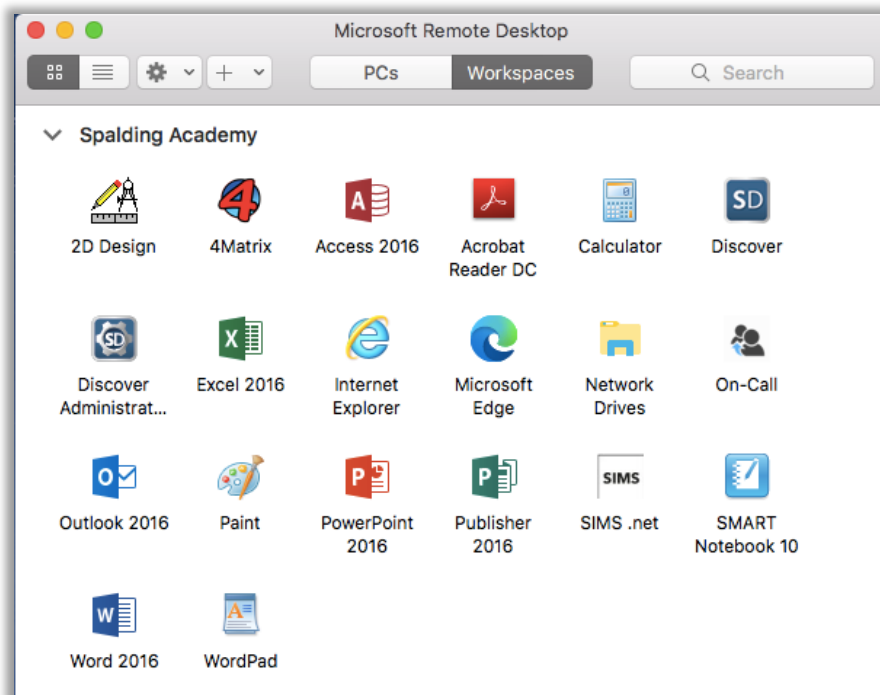


5. Click **ADD**, then enter your school credentials prefixing your username with the below, depending on which school you are accessing, and click **Continue**.

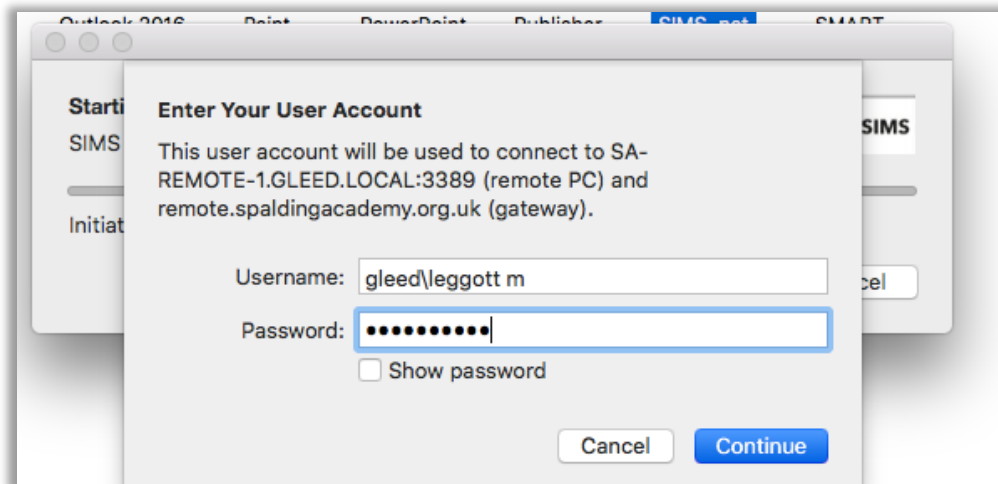
Spalding Academy:	GLEED\ GLEED\	i.e glead\smith j
Bourne Academy:	BACAD\ BACAD\	i.e bacad\smithj
Giles Academy:	GILES-SCHOOL\ GILES-SCHOOL\	i.e giles-school\jsmith



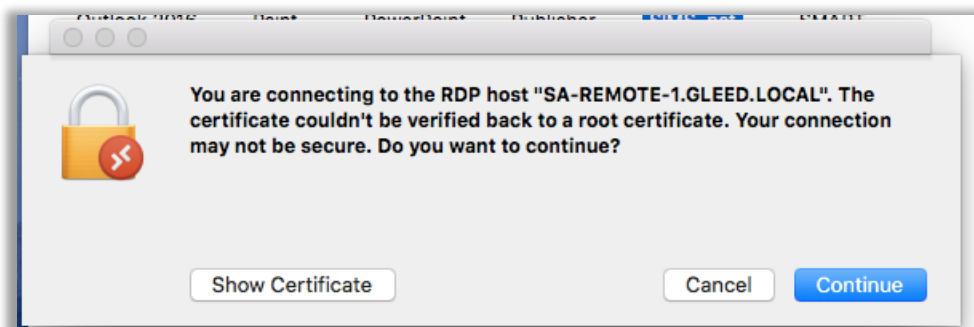
6. You should then see all the available APPS.



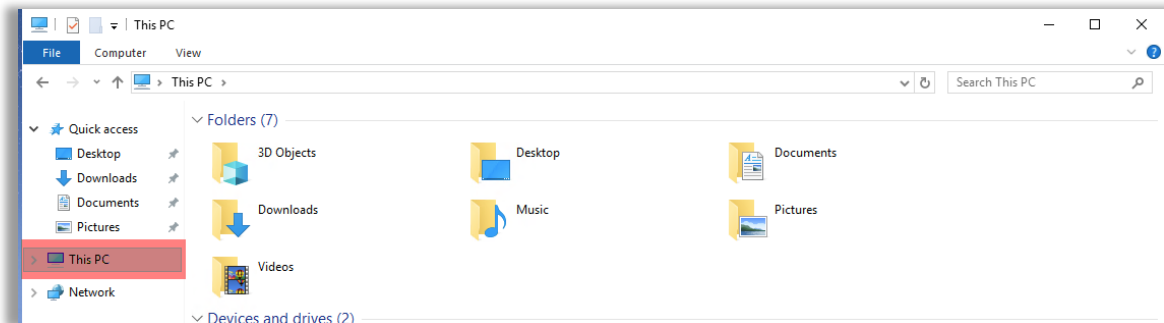
7. Double click on an Available APP, and you will be prompted again to enter your credentials again the same as earlier:



8. Click **Continue** on the certificate prompt

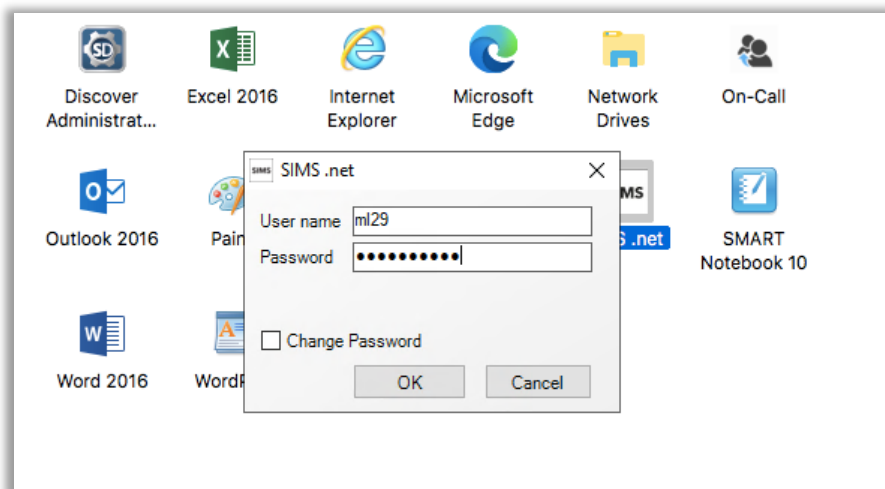


9. When accessing Network Drives and the explorer Window opens, you may need to click on **This PC** to see all the network drives.



For Staff Only:

When accessing SIMS.net remotely, the only screen you enter your SIMS login details on is the one below. When you select the APP on the main 'Workspace Screen'. You authenticate with your network login details then ONLY when you receive the box below, you enter your SIMS details.



For any queries or username/password issues, please contact the relevant Site's IT Support using the email addresses located at the top right of each page including any screenshots or error messages, that will help us to assist.

Thank you.

South Lincolnshire Academies Trust
IT Department